

LET THE CITY IN

KL562



NEW FACADE TO DEFINE
THE TOWN HALL SQUARE



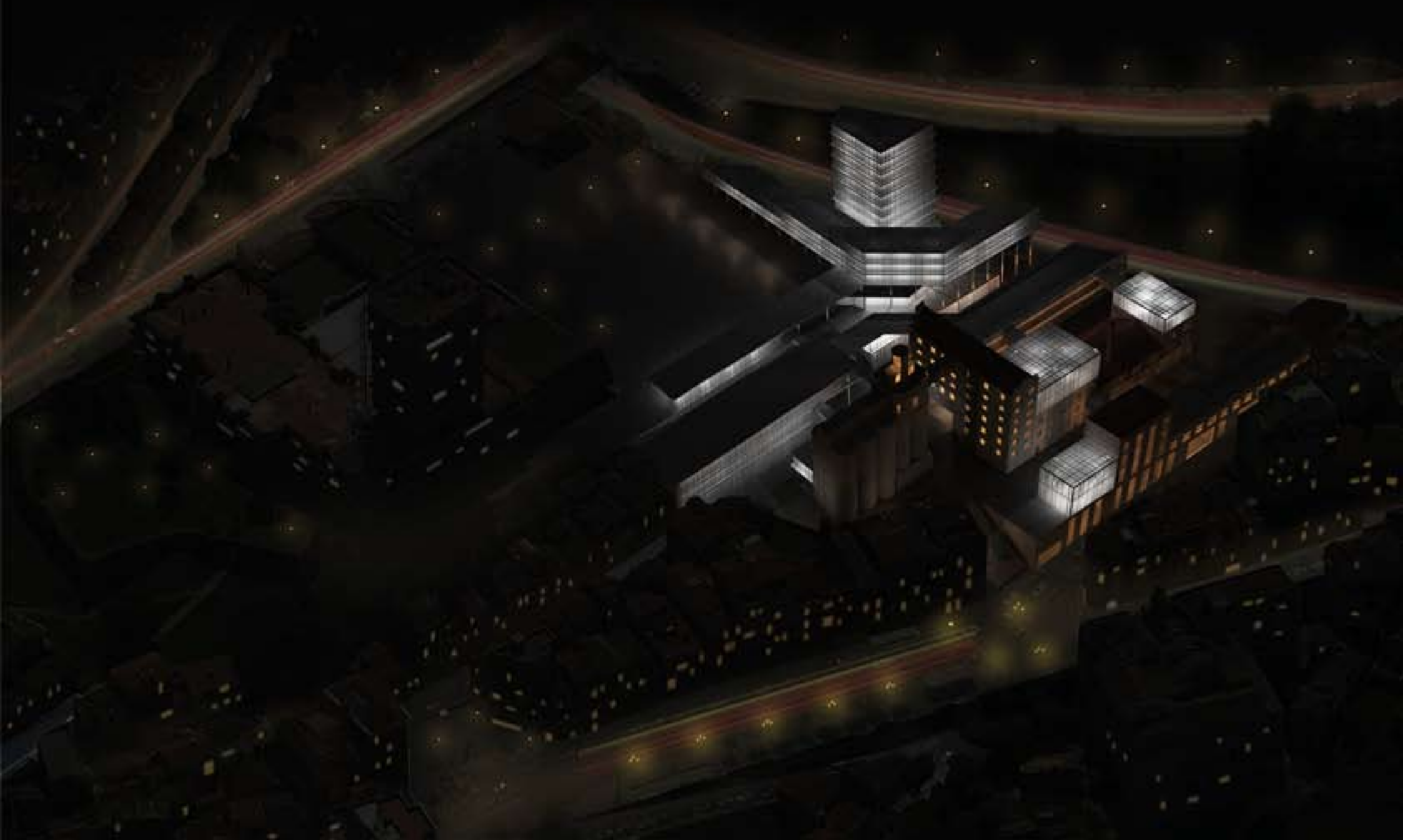
CREATION OF NEW PUBLIC
CONNECTED SPACES

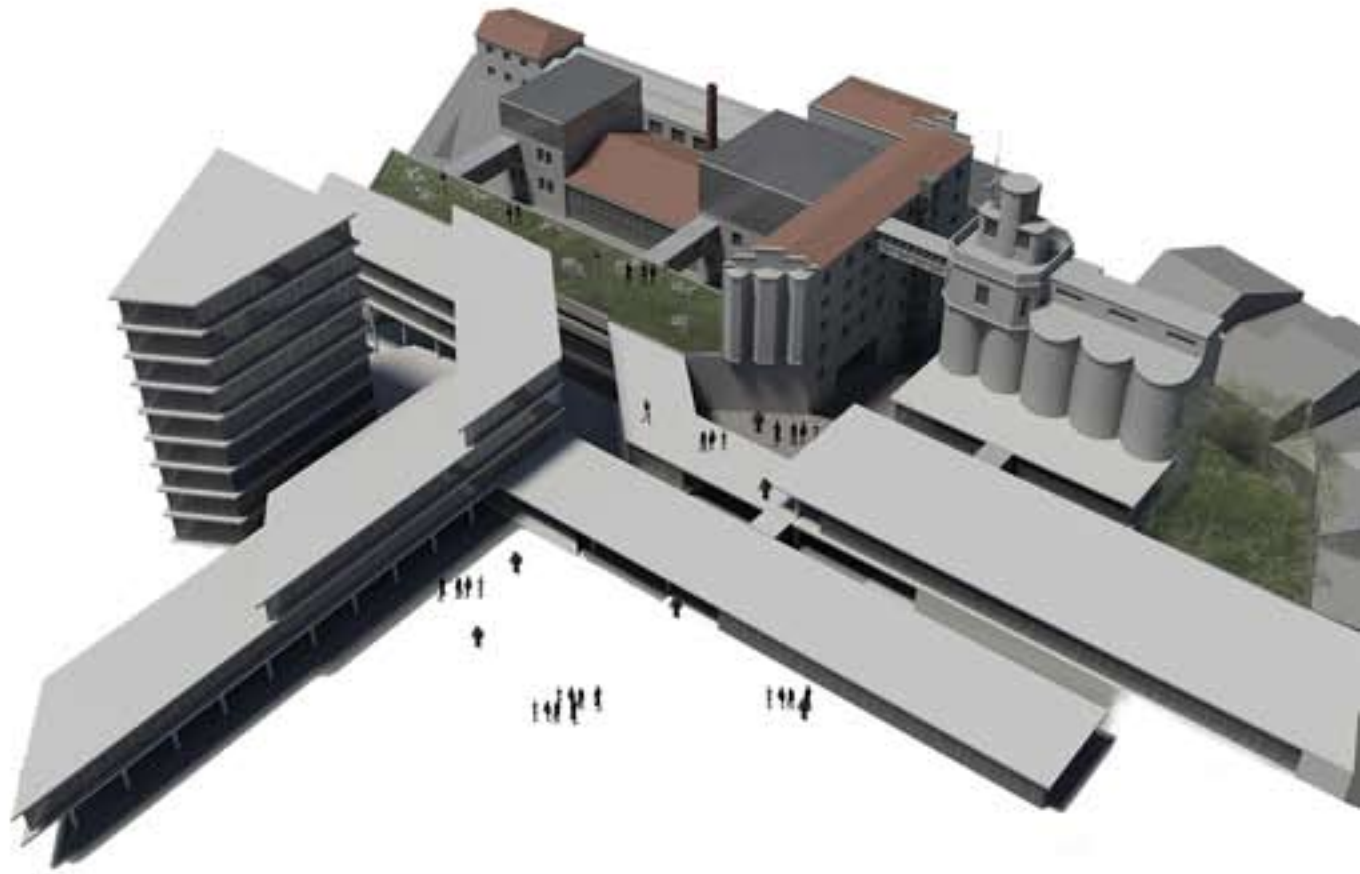


COVERED AREAS FOR RAIN
PROTECTION



RESPECT THE BREAD FACTORY SKYLINE





The main objectives of the project are to improve city connections while the identity of the Bread Factory remains.

It aims to connect existing underutilized public spaces solving the cross-connection between the City Hall square and the Alfonso XII street and longitudinal-connection between San Sebastian Castle and the city.

The Bread Factory complex becomes a node which generates urban life around.

New small public spaces are created inside the project area. Most of the existing buildings are preserved. The new pieces are placed in the most damaged areas and the new big pieces are located outside the Bread Factory area.

The uses are distributed with the aim of revitalizing public spaces and allow the connection between buildings placing compatible uses in the connection points.

- CROSS-CONNECTION
- LONGITUDINAL-CONNECTIONS
- GREEN ROOF-CONNECTION
- NEW PIECES

